

Florida Transit Safety Summit

Mass Transit BASE Program Tampa, FL



Transportation
Security
Administration

June 3, 2015

Office of Security Operations
Surface Compliance Branch

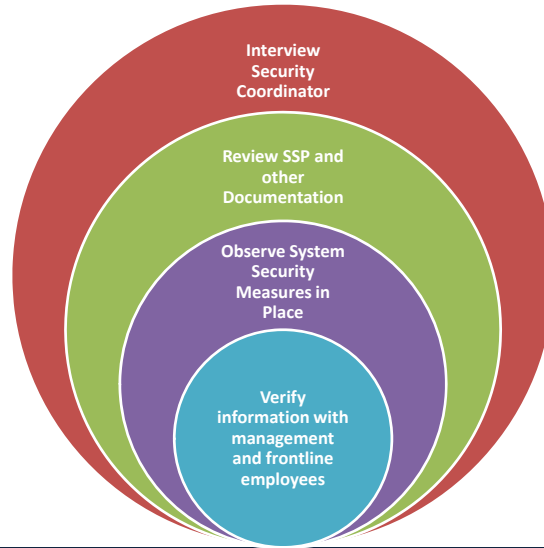
Compliance Programs

TSA Mass Transit BASE

What is the Mass Transit BASE?

- Baseline Assessment for Security Enhancements (BASE)
- A **voluntary** assessment designed to evaluate the status of security and emergency response programs on transit systems throughout the nation
- The **TSA/FTA 17 Security and Emergency Management Action Items for transit agencies**. Embedded in the TSA/FTA 17:
 - 49 CFR Part 659 FTA security regulations
 - APTA Security Standards
 - TSA Six (6) TSF critical elements
 - TSA's recommended security practices not regulated
 - Total of approximately 200 questions
- BASE is also conducted in Highway and Pipeline surface modes

BASE Data Gathering Process



BASE GOALS

1. **ESTABLISH** a baseline of the transportation agency's internal security processes, procedures and policies against TSA, APTA and FTA-developed security recommendations.
2. **IDENTIFY** security program strengths and weaknesses.
3. **ELEVATE** the transportation agency's overall security environment through development of corrective action recommendations to remediate any security program weaknesses detected during the review.
4. **ENHANCE** security partnership between TSA and transit stakeholders through ongoing engagement.



Security Action Item Categories

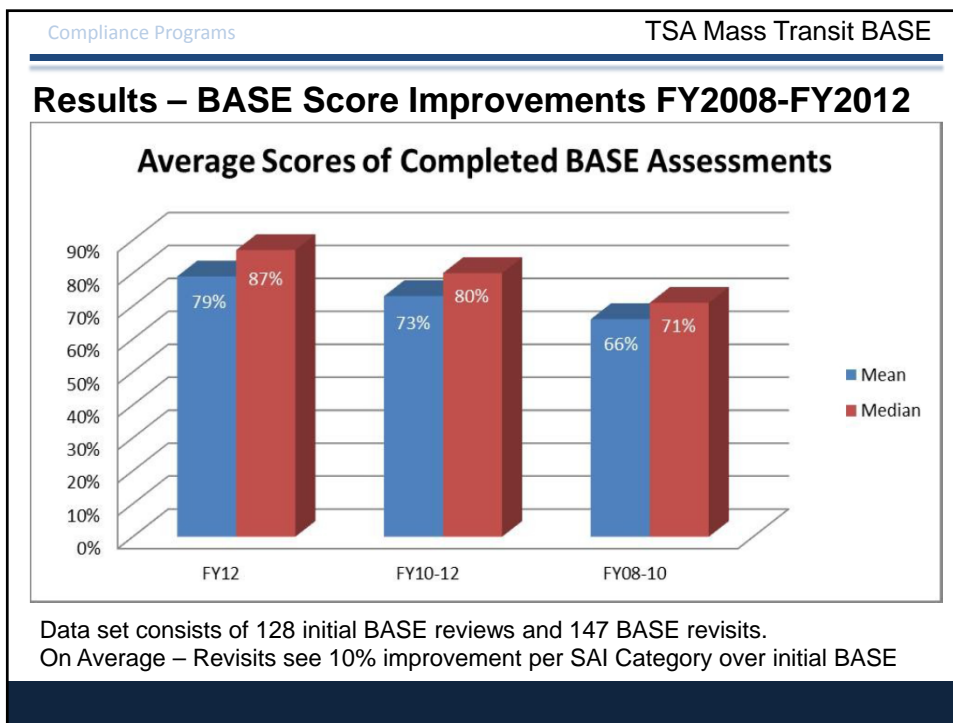
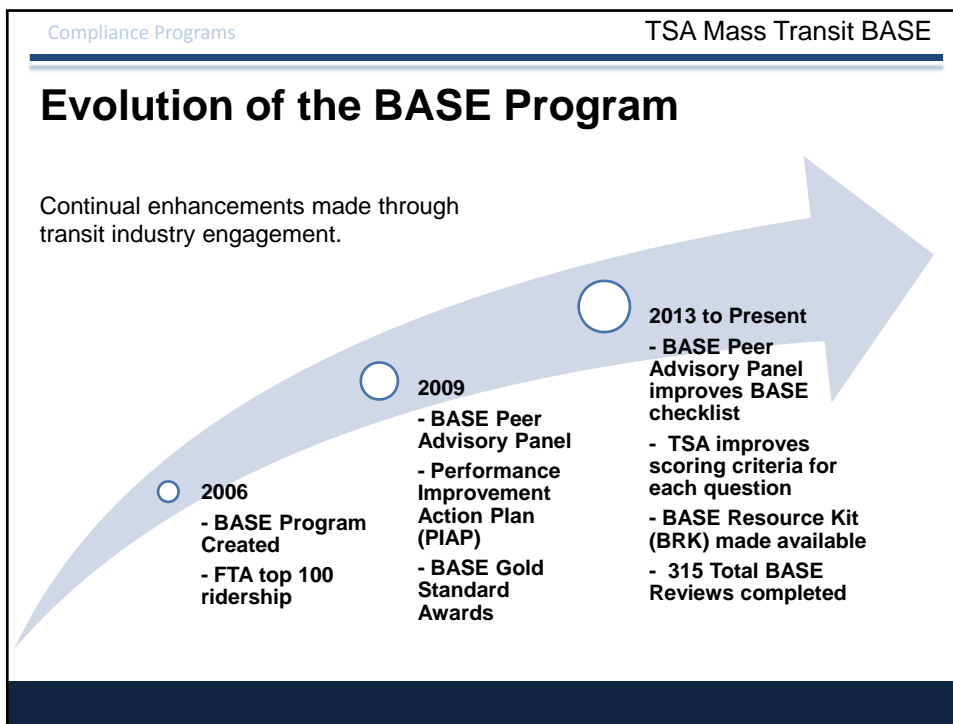
1. Establish written Security Programs and Emergency Management Plans.
2. Define roles and responsibilities for security and emergency management.
3. Ensure that operations and maintenance supervisors, forepersons, and managers are held accountable for security issues under their control.
4. Coordinate Security and Emergency Management Plan(s) with local and regional agencies.
5. Establish and maintain a Security and Emergency Training Program.
6. Establish plans and protocols to respond to the National Terrorism Advisory System (NTAS) alert system.
7. Implement and reinforce a Public Security and Emergency Awareness program.
8. Establish and use a risk management process.
9. Establish and use an information sharing process for threat and intelligence information.
10. Conduct Tabletop and Functional Drills.
11. **Developing a Comprehensive Cyber Security Strategy.***
12. Control access to security critical facilities.
13. Conduct physical security inspections.
14. Conduct background investigations of employees and contractors.
15. Control access to documents of security-critical systems and facilities.
16. Ensure existence of a process for handling and access to Sensitive Security Information (SSI).
17. Conduct Security Program audits.

*New BASELINE Category and not factored into overall score

TSA Transit Security Fundamentals (TSF)

- 1) Protection of high risk/high consequence underwater/underground assets and systems.
- 2) Protection of other high risk/high consequence assets that have been identified through system-wide risk assessments.
- 3) Use of visible, unpredictable deterrence.
- 4) Targeted counter-terrorism training for key front-line staff.
- 5) Emergency preparedness drills and exercises.
- 6) Public awareness and preparedness campaigns.

Total of 54 TSF Questions in the BASE



Keys to a Successful BASE

- BASE review is only part of the security partnership
- Prepare with local TSA Surface Inspectors prior to interview(s)
- Answer honestly in order to identify areas for improvement
- Provide as much feedback as possible
- Utilize tools to improve weaknesses and strengthen existing security programs
 - BASE Executive Summary - Recommended Actions
 - BASE Resource Kit
 - Continual engagement with local TSA Surface Inspectors

Questions for Audience

- Who here has participated in a BASE?
 - Would you be willing to share some of your experiences with the process?
- Any feedback that you would like to provide TSA HQ to improve the BASE Program and Process?
- Any areas that you can suggest to enhance the BASE - for example, limited cyber section recently added
- Where would you like to see your local TSA Inspectors be more involved

Contact Info and Questions

Curt Secrest

Regional Security Inspector-Surface

Jacksonville, FL

– curt.secrest@dhs.gov

- O-(904) 380-4075
- C-(904) 874-7224